

*Parkmore*  
HOTEL

[parkmorehotel.co.uk](http://parkmorehotel.co.uk)





*Hello and welcome*

---

To make your stay with us as comfortable and safe as possible, we would be grateful if you could take a few minutes to read this information.

If you require assistance during the day, please come to the reception desk located at the bottom of the main stairs.

Overnight, there will always be a member of staff in the building. In an emergency, please call reception on 0 from your room or 01642 786 815.

We are a small team at Parkmore Hotel working hard to make sure your stay is as enjoyable as possible. If there is anything

we can help you with during your stay, please ask one of us and we will do our utmost to assist you. We pride ourselves on our reputation and customer service, therefore should you have any concerns or issues please give us the opportunity to resolve this during your stay.

We would appreciate you taking the time to post your feedback regarding your stay on our Trip advisor page.

We hope that you enjoy your stay with us.

Thank you

*Parkmore Hotel Team.*

## RECEPTION SERVICES

Our reception desk is operated by our reception team between 7.00am & 11.00pm, should you require anything during your stay please do not hesitate to contact us by dialling 0.

Between 11.00pm- 7.00am our night porter is on hand and can also be contacted by dialling 0.

Please note that our check out time is at 11:00am.

Express check out is also available, please enquire at reception.

## TELEPHONE

Your bedroom is equipped with a direct dial telephone:

Front desk - Dial 0

Another guest - Dial Room number

Local calls - Dial 9 + contact number

Please ask reception for access to the outside phone lines.

## INTERNET ACCESS

Please select BW\_Parkmore from the available Wi-Fi connections. The password for the Wi-Fi is located in your Key Card Holder.

If you have any difficulties, please contact our 24- hour reception by dialling "0".

## NEWSPAPERS

Daily newspapers can be ordered from reception. Please order your paper by 8pm for delivery the following morning to collect from reception from 7am.

## WAKE UP CALLS

If you require a wake-up call, please contact reception and we can arrange this for you.

## LUGGAGE ASSISTANCE

Should you require assistance with your luggage, please let a member of the reception team know and one of our team will be happy to help.

You may also store luggage at reception between 11am-11pm, however please note the hotel does not accept liability during storage.

## BREAKFAST TIMES

Continental Breakfast

6.00am – Monday to Friday

7.00am – Saturday & Sunday

Cooked Breakfast

6.30am – 10.00am Monday - Friday

8.00am – 10.00am Saturday & Sunday

## THE PURPLE PEACOCK

Monday - Saturday 12.00pm - 9.30pm

Sunday 12.00pm - 9.00pm

Food is served all day at the bar.

# WELCOME TO PARKMORE HOTEL

---

## ROOM SERVICE

Room service is available from the main menu for a £4.00 tray charge; please note hot food is served until 9.30pm and cold sandwiches can be purchased after this time.

## TOILETRIES

Available from reception free of charge, we have a full range of toiletry items including face towels.

Please enquire at reception. All items are subject to availability.

## IRON & IRONING BOARD

Please call reception if you require the use of an iron and ironing board.

## ELECTRIC FANS

Electric fans are located in the wardrobe within the room.

## ADDITIONAL BEDDING

Extra bedding, pillows and towels are available free of charge please contact our reception team should you require any additional items.

## POWER ADAPTORS

Electrical power adaptors are available from reception.

## SAFETY DEPOSIT BOX

We have a safe at reception for storage of any valuables, we will ask for you to sign your items in and out. Please contact reception for further details.

## CREDIT CARDS

We accept all major credit & debit cards including American Express.

## BUSINESS SERVICES

Business services are available between 7am-11pm offering fax and photocopying if required.

## BOTTLED WATER

Bottled water is available 24 hours a day at a surcharge please enquire at reception.

## SNACKS & BEVERAGES

Snacks & Beverages are available 24 hours a day please contact reception.

## FIRE PRECAUTIONS

Please read the instructions located on the back of your bedroom door and familiarise yourself with the emergency exists.

In the event of a fire please leave by the nearest exit.

Our scheduled fire alarm test is every Monday at 12.30pm.

## DOCTORS & DENTIST

If you need medical attention, please call reception or dial 999 from your room in case of emergency.



## TAXIS

Royal Cars – 01642 666666  
Station Cars – 01642 791991

Please contact reception should you wish to book a taxi, we are happy to book one on your behalf.

## CONFERENCE ROOMS

We have a number of conference rooms available for use please ask at reception for further details.

## FEEDBACK

We would value feedback after your stay; please let us know your thoughts by visiting [www.bwfeedback.com](http://www.bwfeedback.com)

## PARKMORE LEISURE CLUB

Our Leisure club is free to use for all of our residents.

The opening times are:

Monday – Friday 7.00am – 22.00pm  
Saturday 7.00am – 21.00pm  
Sunday 7.00am – 21.00pm

Opening times may vary over Bank Holidays.

Towels are available from the leisure club reception and lockers are available to guests in the changing rooms, these are operated with a padlock.

*Bramhall*  
SUITE

— FUNCTION ROOM —

**LOOKING FOR  
THE PERFECT  
VENUE FOR YOUR  
WEDDING OR  
CELEBRATION?**



*See reception for more  
information*

## VISITOR ATTRACTIONS

---

### EAGLESCLIFFE GOLF CLUB

0.2 miles

[www.eaglescliffegolfclub.co.uk](http://www.eaglescliffegolfclub.co.uk)

### BUTTERFLY WORLD

0.9 miles

[www.butterfly-world.co.uk](http://www.butterfly-world.co.uk)

### PRESTON PARK MUSEUM & GROUNDS

1 mile

[www. https://www.prestonparkmuseum.co.uk](https://www.prestonparkmuseum.co.uk)

### YARM VILLAGE

1.5 miles

### ROSEBERRY TOPPING

15.6 miles

### DORMAN MUSEUM

6.6 miles

[www.dormanmuseum.co.uk](http://www.dormanmuseum.co.uk)

### WYNARD WOODLAND PARK

8.5 miles

### CAPTAIN COOK BIRTH PLACE MUSEUM

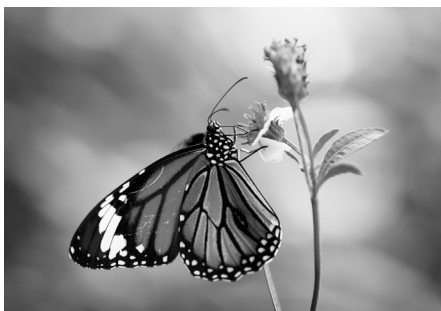
10.5 miles

[www.captcook-ne.co.uk](http://www.captcook-ne.co.uk)

### MIDDLESBOROUGH INSTITUTE OF MODERN ART

7.4 miles

[www.visitmima.com](http://www.visitmima.com)





# *A Unique Dining Experience*

**HAVE YOU BOOKED  
YOUR TABLE?**

Visit reception or dial 0 from  
your room to speak with a member of staff

[WWW.ILOVEPURPLEPEACOCK.COM/YARM](http://WWW.ILOVEPURPLEPEACOCK.COM/YARM)

Yarm Road,  
Stockton-on-Tees,  
TS16 0DH

0164 279 2866  
[info@purplepeacockyarm.com](mailto:info@purplepeacockyarm.com)

WELCOME TO PARKMORE HOTEL

---

# *The Hideaway*

SPA & LEISURE



*Enjoy our facilities*  
**THROUGHOUT YOUR STAY**

---

**GYM | SAUNA | STEAM ROOM | JACUZZI  
SWIMMING POOL | HYDROTHERAPY POOL**

---

## **OPENING TIMES**

Monday - Friday	7am - 10pm
Saturday	7am - 9pm
Sunday	8am - 10pm

Call 01642 792860

or email [leisure@parkmorehotel.co.uk](mailto:leisure@parkmorehotel.co.uk)





# JOIN REWARDS

**BECOME A MEMBER OF  
BEST WESTERN REWARDS**

As a rewards member you will get even more from your stay - like free room upgrades, recognition gifts and bonus points as you make your way up the membership tiers.



**It's free to join! If you would like to start earning points straight away, please contact our reception team.**

# Bramhall

SUITE

## FUNCTION ROOM

Originally the home of a shipping line owner in the 1800's, the Parkmore has been an established Hotel for over 40 years, having gradually grown over that time from a family run bed and breakfast, to the extensive facility it is now.

The Parkmore Hotel is fortunate to feature and proud host to the Bramhall Suite, a premium and fully-equipped function room, available for private and corporate hire.

### CONFERENCES

Regardless of the activity, or size of your group, we have the facilities to cater for a multitude of events. Plus, our friendly, professional staff will ensure your event is a worldclass experience.

The Parkmore Hotel offers 55 bedrooms, including singles, doubles, twin family rooms and suites. In other words – something to suit everyone! Plus, all guests can make use of our ample, free parking.

We have a range of packages to offer from the Basic Delegate Package to the Executive Delegate package.

All of our packages include;

- Conference room hire
- Tea, coffee, cordial & bottled water
- Flip chart
- Pads, pencils and placemats
- Free Wifi

The premium packages offer, atop these basics, varied types of catering along with other types of presentation equipment.

If you need help choosing a package combination that is right for you, please speak to our Conference Team, who will be happy to help. This can include discussing bespoke requirements, availability, and any part of the booking process.

### WEDDINGS

From our picturesque venue nestled away in the beautiful suburbs of Yarm, to your own personal wedding co-ordinator, and a stunning red-carpet reception; the celebration you deserve awaits at The Parkmore.

As part of your wedding weekend you'll



have access to the superb and varied facilities, including; The Hideaway spa and leisure treatment centre, recently refurbished wedding suites, and our brand new Asian-fusion restaurant, The Purple Peacock.

We offer a fully customisable bespoke package for those couples that want something a bit different. From the number of guests, to the food options, or a particular theme - absolutely anything can be customised.

If you'd like to discuss your wedding requirements or make a booking, please contact our dedicated wedding team at [weddings@parkmorehotel.co.uk](mailto:weddings@parkmorehotel.co.uk)

## CHRISTMAS PARTIES

Looking for a fun night out with friends or family? Or perhaps the perfect place for the office party of the year? Our Christmas party nights will get you right into the swing of the festive spirit; packed with drinks, delicious food, and fantastic live entertainment, they're a guaranteed night to remember.

## SUITES

Parkmore has a range of suites on offer to those guests looking for a more luxurious stay. Our range of suites, junior suites and family rooms offer a connected private lounge. Our suites are perfect for bridal parties, families & business people alike.

---

For more information on the various packages that we offer and events that we host, please get in touch with the hotel manager, James Leeds.

Tel: 01642 786815

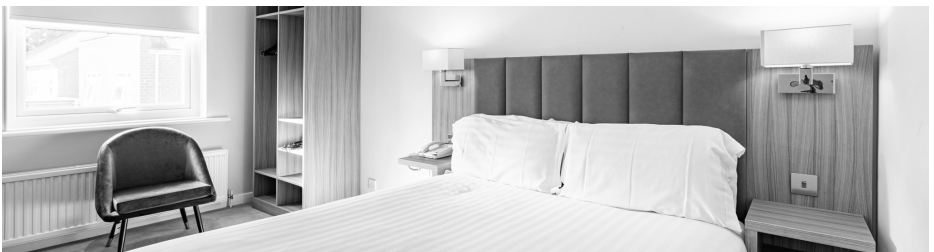
[email: jleeds@parkmorehotel.co.uk](mailto:jleeds@parkmorehotel.co.uk)

WELCOME TO PARKMORE HOTEL

---









[parkmorehotel.co.uk](http://parkmorehotel.co.uk)

---

Tel: 01642 786815

email: [info@parkmorehotel.co.uk](mailto:info@parkmorehotel.co.uk)

636 Yarm Road, Stockton on Tees,  
TS16 0DH

more hotels by:



• SEA HOTEL •

• METROPOLITAN HOUSE •

**HOTEL**  
**52**

• WHITLEY BAY •

• STANLEY •

• THINFORD •

---

for more information visit:  
[highstreethospitality.co.uk](http://highstreethospitality.co.uk)